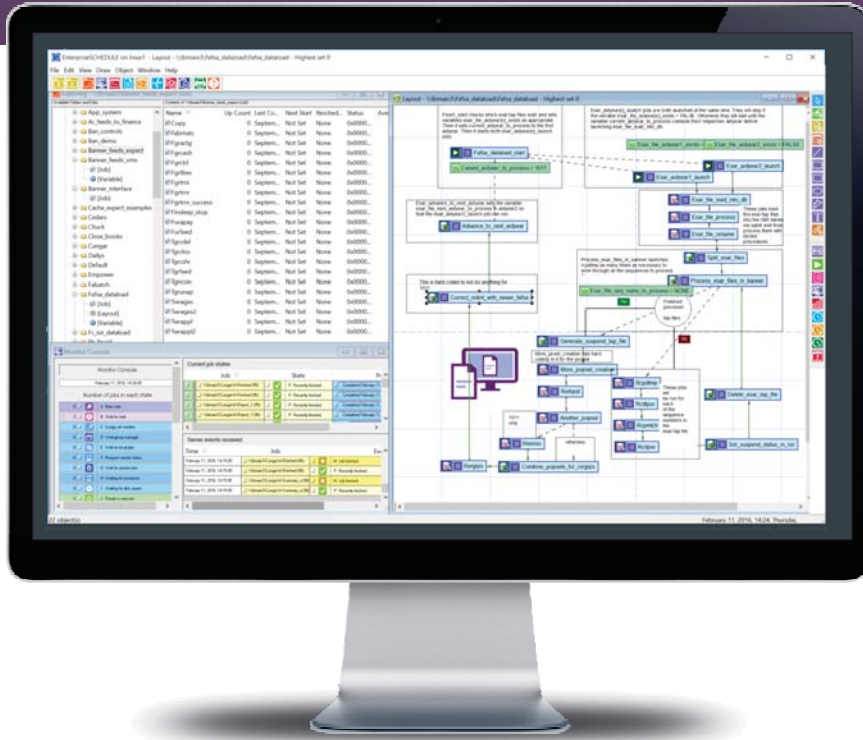


EnterpriseSCHEDULE

Enterprise Job Scheduling for Banner®

Key Features

A variety of customized job configuration forms designed specifically for Banner® users to automate time consuming tasks

Includes a core library of job templates which can be used to quickly create Banner® jobsets that perform the most essential and repetitive tasks

Develop simple to complex job streams that rely on time, resources, interdependencies and other factors to determine the flow of critical system events

Receive constant, up to the minute feedback on your Banner® job activity through email notification alerts and monitor alerts of job failures

Automate Banner® using the powerful EnterpriseSCHEDULE job scheduling software

Advanced Banner® Automation Tools

If you're a typical Banner® installation, your work requires a multitude of daily, repetitive Banner® tasks that take time away from the things you need to do. You may spend your day processing everything from financial aid statements to academic administration to enrollment and recruitment.

With 30+ years of Enterprise job scheduling experience and extensive experience automating Banner® procedures for many education institutions, **EnterpriseSCHEDULE** from ISE is the Banner® automation tool that you've been looking for.

ISE has built a suite of Banner® jobs that are designed to automate the most common tasks that you do daily, weekly or monthly. The Graphical Interface is augmented with custom Banner® forms that facilitate quick updating of parameters and overrides. Changes to file locations, passwords, file formats etc. can quickly be updated using these forms.

EnterpriseSCHEDULE coupled with Banner® simplifies the automation of Banner® tasks using features such as interdependencies and resources to assure a uniform job stream every time. Need a database update to complete before running a report? **EnterpriseSCHEDULE** job streams make it easy to be sure your jobs only run when all the requirements have been met.

What is EnterpriseSCHEDULE?

EnterpriseSCHEDULE is the most versatile and easy to use enterprise job scheduler available for automating your applications. Control, administer and monitor batch processing across a range of platforms using a variety of interfaces. Choose from a Windows client, Web/mobile or command line interface to work with jobs. EnterpriseSCHEDULE has evolved into the premiere enterprise batch job scheduler with over 30 years of additions and refinements.

EnterpriseSCHEDULE will improve and automate your Banner® processing by:

- Command line client using common commands native to the platform.
- Automating repetitive, time consuming Banner® procedures, freeing up staff and reducing the cost of IT operations
- Reducing manual errors by automating the process and workflow of your operations
- Allowing users to define Banner® jobs with custom forms streamline the process
- Building workflows based on job templates designed specifically for Banner®



EnterpriseSCHEDULE

Enterprise Job Scheduling for Banner®



EnterpriseSCHEDULE brings unrivaled Customization and Flexibility to Banner® automation

Manage Banner jobs from a single point of control

EnterpriseSCHEDULE's graphical display provides a real time view of all connected nodes and platforms across an enterprise. This gives you complete access to the custom properties, status, current state and historical log data of all your Banner® jobs.

EnterpriseSCHEDULE is renowned for its dependability and fault tolerance. The system is designed as a distributed peer-to-peer network. This eliminates any single point of failure that is the downfall of many job schedulers. Each server is self-contained and has no operational dependency on other servers (except as required to meet job interdependencies). The clients automatically identify where the data is located and connect to the needed servers.

The single point of control model gives users powerful tools to:

- Create job layouts that show job interdependencies and reflect real time job status
- Create simple or complex interdependencies between jobs
- Use external or local resource variables as parameters and to add more control to job flow
- Monitor, control and administer all jobs from a single point across platforms and enterprises
- View logs and current status of jobs in real time as jobs progress.
- Submit jobs manually, based on time-based controls or initiated by other jobs

"We were very pleased with the assistance we received while building our EnterpriseSCHEDULE Banner® jobsets."

Black Hawk College

"The LMU Financial Aid office started using EnterpriseSCHEDULE about one year ago to automate several Banner® job sequences. Having these jobs sequences run automatically during the night has freed up about 40 man hours per week, and has improved system performance during the day!"

Loyola Marymount University

Example of Custom Properties Page featuring Banner® specific editable parameters

Multiple Client Interfaces

- Windows client includes integrated Banner® forms and prototype jobs to seamlessly create Banner® job streams
- Web based client for browser based access to Banner jobs forms. Mobile interface for phone based scheduling, monitoring and administration of jobs

EnterpriseSCHEDULE is the essential Banner® Automation Tool

Job Scheduling is becoming more and more crucial as the number of processes increases for Banner® users. EnterpriseSCHEDULE is an integrated scheduling tool with customized forms and a suite of essential job templates that will make your transition to Banner® automation seamless.

Contact ISE Inc for a free 45 day demo today.

ellucian.